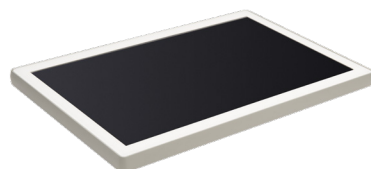


# ET-1002

## 10 inch Color Display

The ET-1002 is a 10" fully graphical, color TFT display, perfect for dynamic customer interaction in stores or POS advertisement.



## Highlights

- The 10" full color TFT display is a more advanced way of communicating to grab the attention of the customers with dynamic content
- It is designed to be attached into product shelves, walls, shop windows or in other POS constructions
- It can also be used to set a specific mood or to provide more product information
- Uploading content is easy and can be controlled at any time via USB or by using the Wi-Fi connection
- 100% display content flexibility like video's and slideshows
- The ET-1002 is suitable for many applications for retail, food industry, roomsignage, hospitality, real estate, travel agencies and many more
- A variety of secure, durable and esthetically pleasing display mounting options and accessories for in-store shelving are available in the market
- Charging via cable
- Wi-Fi 2.4 and 5 GHz

# ET-1002

## Product Specifications

### ET-1002 Wall mount and & Rail mount

10 inch digital signage for retail applications is compatible to connect to a power cable or to wired steel cables when using the optional bracket.

### Operation

CPU: 8-core Cortex A53, 1.4GHz

### Memory

Internal Flash: 4GByte eMMC

Internal RAM: 1GByte DDR3, 800 MHz

Supporting files: MP4, 3GP, JPEG, PNG

### Communication

USB: Ver. 2.0

Wi-Fi: Wi-Fi 802.11ac 2.4 + 5 GHz

Zigbee: Proprietary protocol

Bluetooth: Ver. 4.1 (+BTLE)

### Power

Input: 12 ~ 48V

Energy consumption: 10 watt

Backup battery: Rechargeable Lithium-Ion battery 3.7V  
200 mAh

### Display

Size: 10", 1280 x 800 pixels (WxH), 24Bit RGB color

Active area: 135.6 x 216.96 mm (WxH)

Viewing angle: 85° in all directions (contrast ratio > 10)

Dot Pitch: 0.1695 x 0.1695

Mode: Portrait and landscape

### Durability

Temperature in operation: 0 to 40 °C / 32 to 104 °F

Temperature in storage: 0 to 40 °C / 32 to 104 °F

Humidity in operation: 10 - 90% (non-condensing)

Humidity in storage: 10 - 90% (non-condensing)

### Physical

Dimensions (WxHxD): 241.9 x 160.7 x 21.8 mm

Weight: Ca. 435 g

Colors: White

### Regulatory & Safety

Product compliance: RoHS / WEEE, FCC, CE (RED),  
IEC60950 (ITE Safety part 1)

### Mounting options

For more details contact your local representative.