

**OPTORI OP93**

# The New Standard of Flagship Scanning

Bridging the gap between high-end smartphone performance and industrial-grade durability.



Snapdragon  
SM6225  
Architecture



13ms Ultra-Fast  
Scan Engine



Triple-Protection  
Armoring

# Zero Compromises: Performance Meets Industrial Grit

The era of choosing between processing speed and hardware durability is over.

## The Industry Bottleneck

## The OP93 Blueprint Solution



**Slow Processing:**  
Legacy chips lag during multitasking, causing workflow delays.



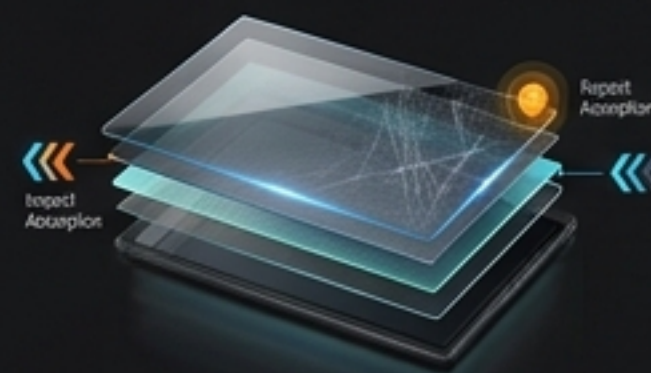
**Flagship Brain:**  
TSMC 6nm architecture with UFS storage boosts data access by **800%**.



**Fragile Displays:**  
Consumer-grade screens shatter in warehouse environments.



**Armored Window:**  
1.1mm Lithium aluminum-silicon glass cuts LCD damage risk by **90%**.



**Power Drain:**  
High-volume scanning kills batteries mid-shift.



**Intelligent Heart:**  
5000mAh intelligent battery sustains 18+ hours of continuous, active scanning.



# Unmatched Processing Power



**Architecture:** Qualcomm Kryo 8-core processor operating at 2.8GHz.

**Process:** Advanced TSMC 6nm process, reducing power consumption by 45%.

**Optimization:** Built-in AI hardware engine specifically designed to optimize app performance for POS systems and real-time logistics tracking.

**Connectivity Edge:** Top-tier 4G connectivity paired with UFS storage for zero-latency data syncing.

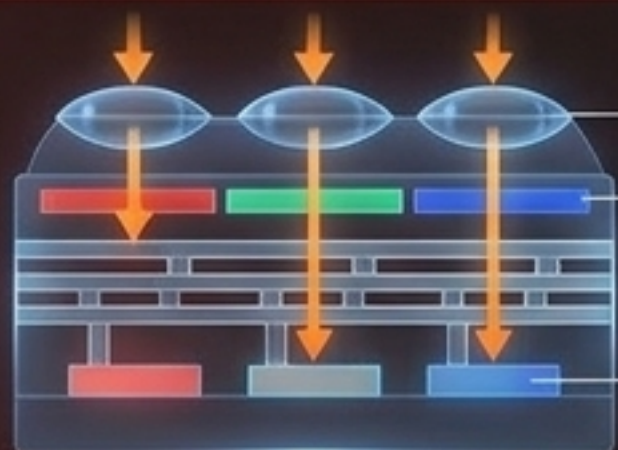
# Precision at the Speed of Light

1.3MP back-illuminated image chip outpaces industry benchmarks by 30%.

## Speed Track

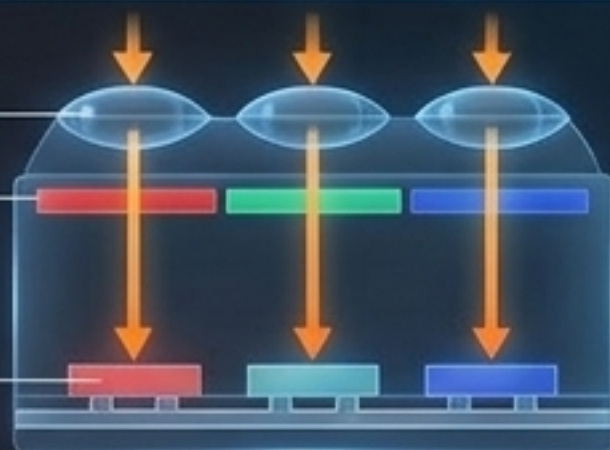


### Standard Front-Illuminated Structure



Standard Front-Illuminated Structure

### Advanced Back-Illuminated Structure



Advanced Back-Illuminated Structure

**Real-World Impact:** Adapts instantly to low-light conditions, crumpled labels, and reflective surfaces to eliminate checkout and sorting bottlenecks.



# Vivid HD Vision, Day or Night



## Adaptive Brilliance

600 nits peak brightness with dynamic adaptive dimming ensures perfect clarity under direct sunlight or in dimly lit warehouses.

## Industrial Touch

Ultra-sensitive Incell touchscreen engineered to respond instantly to thick work gloves or wet fingers—essential for cold chain logistics.

## Durability Integrated

The Panda 1.1mm glass provides a full-viewing angle that minimizes glare while resisting daily scratches and wear.

# Built to Endure: Triple-Protection Architecture



## Layer 1: Impact Resistance

Lithium aluminum-silicon secondary reinforced glass. Drop-tested to survive 1.5-meter impacts on steel (30+ drops).

## Layer 2: Structural Integrity

Heavy-duty metal middle frame integrated with high-absorption anti-collision corners to distribute kinetic force.

## Layer 3: Environmental Sealing

IP65-rated waterproofing featuring a specially designed waterproof USB plug. Shields internal mechanics from heavy rain, spills, and intense dust.

# Next-Gen Connectivity: The Lifeline of Operations



## Wi-Fi 6 Ready Technology

- Engineered for dense, high-traffic networks (retail hubs, crowded warehouses).
- MIMO antenna array ensures stable signals even in metal-rich environments.
- Enables zero-lag multitasking between inventory software, VoIP, and database syncing.

## Seamless NFC Integration

- Integrated into the reinforced battery back cover.
- Enables tap-to-authenticate payments, secure site clock-ins, and rapid data transmission across all scenarios.
- Eliminates cables and manual entry errors for healthcare ID verification and retail transactions.

# Crystal-Clear Audio in High-Decibel Arenas



## 100dB HIFI Output

Specifically engineered for noisy environments, delivering sound loud enough to cut through warehouse clamor, traffic, or bustling retail floors.

## High-Efficiency Channel

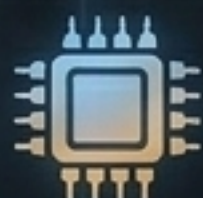
Advanced acoustic design boosts overall volume by 10–15dB while actively slashing power drain.

## Operational Clarity

Optimized speaker and dual-MIC noise reduction guarantee crisp voice prompts for inventory scans, mobile payments, and supervisor broadcasts.

# Power That Lasts: The Intelligent Endurance System

18+ hours of continuous operation driven by a 5000mAh core and smart power routing.



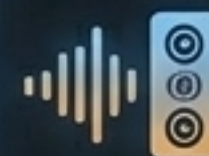
## High-Efficiency Image Chip

Balances scanning speed with precise energy allocation.



## ISP Image Algorithm

Reduces processing drain during heavy capture.



## High-Efficiency Sound Cavity

Maximizes acoustic output with minimal electrical draw.

# 5000mAh



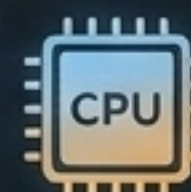
## Low-Power Screen Tech

Dynamic brightness adjustment conserves energy.



## Intelligent Lighting Control

Only uses power when active capture is required.



## Advanced Chip Process CPU

6nm architecture natively runs 45% cooler.

# The Specialists: Tailored Editions for Niche Arenas



## Beidou High-Precision Edition

**Hardware:** Dedicated positioning antenna (MXT901D/MXT906AM).

**Capability:** Achieves sub-meter RTK and centimeter-level positioning.

**Arena:** Logistics fleet tracking, agricultural mapping.



## Medical Edition

**Hardware:** Antibacterial silver-ion shell materials.

**Capability:** Full medical project certification, supports pupil light, wrist strap integrated.

**Arena:** Hospital asset tracking, secure patient ID verification.

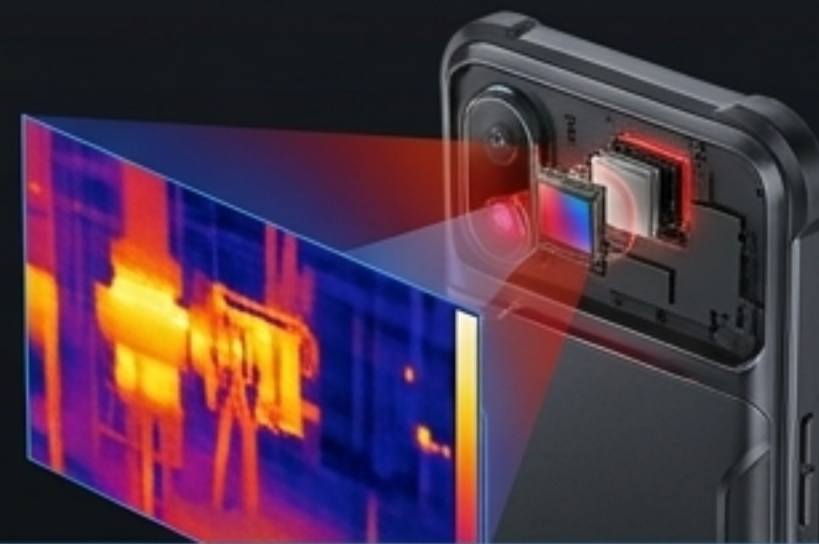


## Infrared Edition

**Hardware:** Built-in 25Hz thermal imaging module (256x192 metadata).

**Capability:** Outdoor night vision, industrial temperature measurement.

**Arena:** Metallurgy, power safety inspections.



# Engineered for the Frontlines



## Warehouse Inventory

Sustained 18-hour battery and MIMO Wi-Fi 6 excel in metal-heavy racking environments.



## Retailer Supermarkets

100dB audio prompts and rapid 22ms 2D scanning eliminate checkout bottlenecks.



## Garment Management

Sleek, lightweight ergonomic design (270g) prevents fatigue during full-store audits.



## Courier Routing & Delivery

600-nit adaptive display cuts through midday glare; 1.5m drop resistance survives the tarmac.

# The Complete Ecosystem: Beyond the Device

## Fleet Charging Solutions



Host + Battery  
Desktop Charger.



Host Four-Channel Charging Dock  
(for shift changes).



Battery Four-Channel  
Charging Hub.

## Ergonomic Extensions



Pistol-Grip Handles for high-  
volume warehouse scanning.



Industrial Wristbands and Backrests  
for secure, hands-free mobility.



Hot-swappable replacement  
batteries for infinite uptime.

# Technical Architecture Blueprint

## Compute & OS

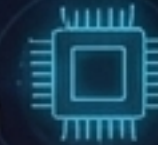
**Processor:**  
Qualcomm SM6225  
(8-core 2.8GHz, 6nm)



**Platform:**  
Android 14

**Memory:**  
4GB/6GB RAM

**Storage:**  
64GB/128GB UFS Flash



## Optics & Interface

**Display:**  
6.01-inch HD IPS



**Touch:**  
Incell, glove/wet touch,  
1.1mm Panda glass

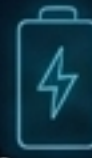
**Camera:**  
13M AF rear camera  
with flash

**Scanner:**  
3rd Gen Scan Engine  
(E3450/E3150/Xenon)  
with green spot tracking



## Endurance & Environment

**Power:**  
5000mAh replaceable  
battery (18hr op, <3h  
charge)



**Sealing:**  
IP65 rating

**Thermals:**  
-25°C to +55°C  
operating temp

**Impact:**  
1.5m drop to steel  
(30 drops)



## Connectivity

**Network:**  
Wi-Fi 6 Ready  
(802.11 ax), Dual SIM  
4G LTE/VoLTE



**Bluetooth:**  
5.2 BLE

**Close Range:**  
NFC Top IC

**Positioning:**  
GPS/Beidou



# The Ultimate Partner in Enterprise Efficiency

## 1. Flagship Speed

6nm Qualcomm architecture and 13ms scanning speeds eradicate workflow friction.

## 2. Uncompromising Armor

IP65, triple-protection engineering thrives in environments that destroy consumer devices.

## 3. Infinite Endurance

Intelligent power management and 5000mAh capacity ensure your operations never stop.

**OPTORI OP93** — Deploy the New Standard.

